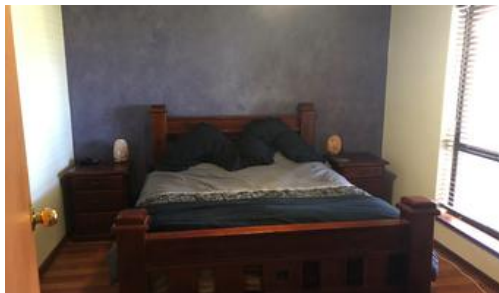


3 Madge Ct, Woodcroft



VERY AFFORDABLE & GREAT FAMILY HOME WITH ENORMOUS POTENTIAL

Peter KRINIS of KRINIS real estate is delighted to bring to you this very affordable family home in a quiet cul-de-sac.

This property has plenty of space inside and out. Sited on an 826sqm approx allotment, the opportunities are endless.

If you are looking for a Family home with a large block of land for the kids to have room to play in, well this is the one for you.

Perhaps you are wanting to develop, then this property offers you the opportunity to sub-divide and reap the rewards. (STCC)

With it's very flexible floor plan, your'e able to utilise this great design to suit you.

****WHY YOU NEED TO MAKE THIS HOME YOURS:**

- * 4 BEDROOMS
- * MASTER WITH ENSUITE AND WIR
- * OTHER BEDROOMS FITTED WITH BIR

4 2 4

Price	SOLD
Property Type	residential
Property ID	85
Land Area	826 m2
Floor Area	177 m2

Agent Details

Peter Krinis - 0404971965

Office Details

NORTH PLYMPTON
44 Hawson Ave North Plympton SA
5037 Australia
08 8351 6954



The above information provided has been furnished to us by the vendor/s. We have not verified whether or not that information is accurate and do not have any belief in one way or the other in its accuracy. We do not accept any responsibility to any person for its accuracy and do no more than pass it on. All interested parties should make and rely upon their own inquiries in order to determine whether or not this information is in fact accurate.