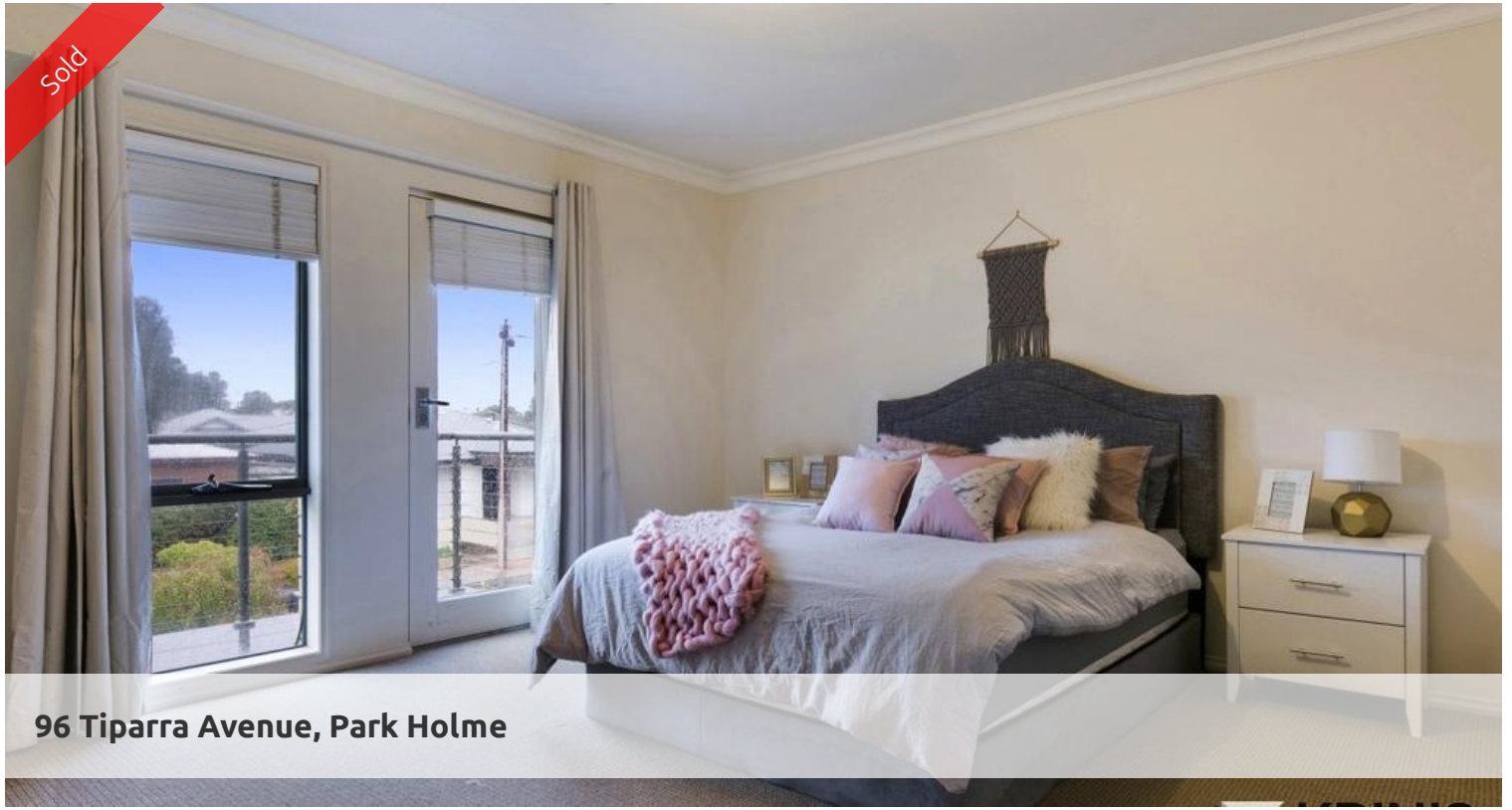


Sold



96 Tiparra Avenue, Park Holme



2 LIVING AREAS, TORRENS TITLED TOWNHOUSE. NO STRATA OR COMMUNITY FEES.

Peter KRINIS of KRINIS real estate brings to you this Magnificent Townhouse, which is sure to impress you with it's flexible floorplan.

Situated right in the heart of Park Holme, amongst good quality homes and close to choice of schools, public transport, shopping centres, doctors and playgrounds & the Adelaide CBD.

**\*\*FEATURES WE LOVE ABOUT THIS HOME\*\***

- \* 3 GOOD SIZED BEDROOMS
- \* HUGE MASTER WITH WIR & ENSUITE & OWN BALCONY
- \* BEDROOMS 2 & 3 WITH BIR
- \* 2 LIVING AREAS
- \* 2ND BATHROOM, TOILET & SHOWER
- \* SEPARATE LOUNGE ROOM
- \* OPEN PLAN KITCHEN/DINING/FAMILY ROOM
- \* KITCHEN FITTED WITH QUALITY FIXTURES

The above information provided has been furnished to us by the vendor/s. We have not verified whether or not that information is accurate and do not have any belief in one way or the other in its accuracy. We do not accept any responsibility to any person for its accuracy and do no more than pass it on. All interested parties should make and rely upon their own inquiries in order to determine whether or not this information is in fact accurate.

🛏️ 3 📶 2 🚗 2

<b>Price</b>	SOLD
<b>Property Type</b>	residential
<b>Property ID</b>	89
<b>Land Area</b>	232 m2

**Agent Details**

Peter Krinis - 08 8351 6954

**Office Details**

NORTH PLYMPTON  
44 Hawson Ave North Plympton SA  
5037 Australia  
08 8351 6954

